

Instruction for changing bearings
FLE400FC, W3400H and EX90C / EX6100C

NOTICE TO SERVICE PERSONNEL

INSTALLATION

Improper installation of Wascomat laundry and wet cleaning equipment can result in personal injury and severe damage to the machine.

REFER INSTALLATION TO QUALIFIED PERSONNEL!

RISK OF ELECTRIC SHOCK

The equipment utilizes high Voltages. Disconnect electric power before servicing.

The use of proper service tools and techniques, and the use of proper repair procedures, is essential to the safety of service personnel and equipment users.

REFER SERVICING TO QUALIFIED SERVICE PERSONNEL!

RISK OF PERSONAL INJURY

This equipment contains moving parts, and some components that may have sharp edges. Improper or careless service procedures may result in serious injury to service personnel.

REFER SERVICING TO QUALIFIED SERVICE PERSONNEL!

ABOUT THIS MANUAL

This manual is intended to provide service guidance to qualified service personnel.

Wascomat and its authorized dealers make no determination regarding the qualification of individuals requesting this service manual. The service provider assumes all risks inherent to the servicing of this equipment and any risks that arise as result of the lack of knowledge or ability of any person servicing this equipment.

REFER SERVICING TO QUALIFIED SERVICE PERSONNEL!

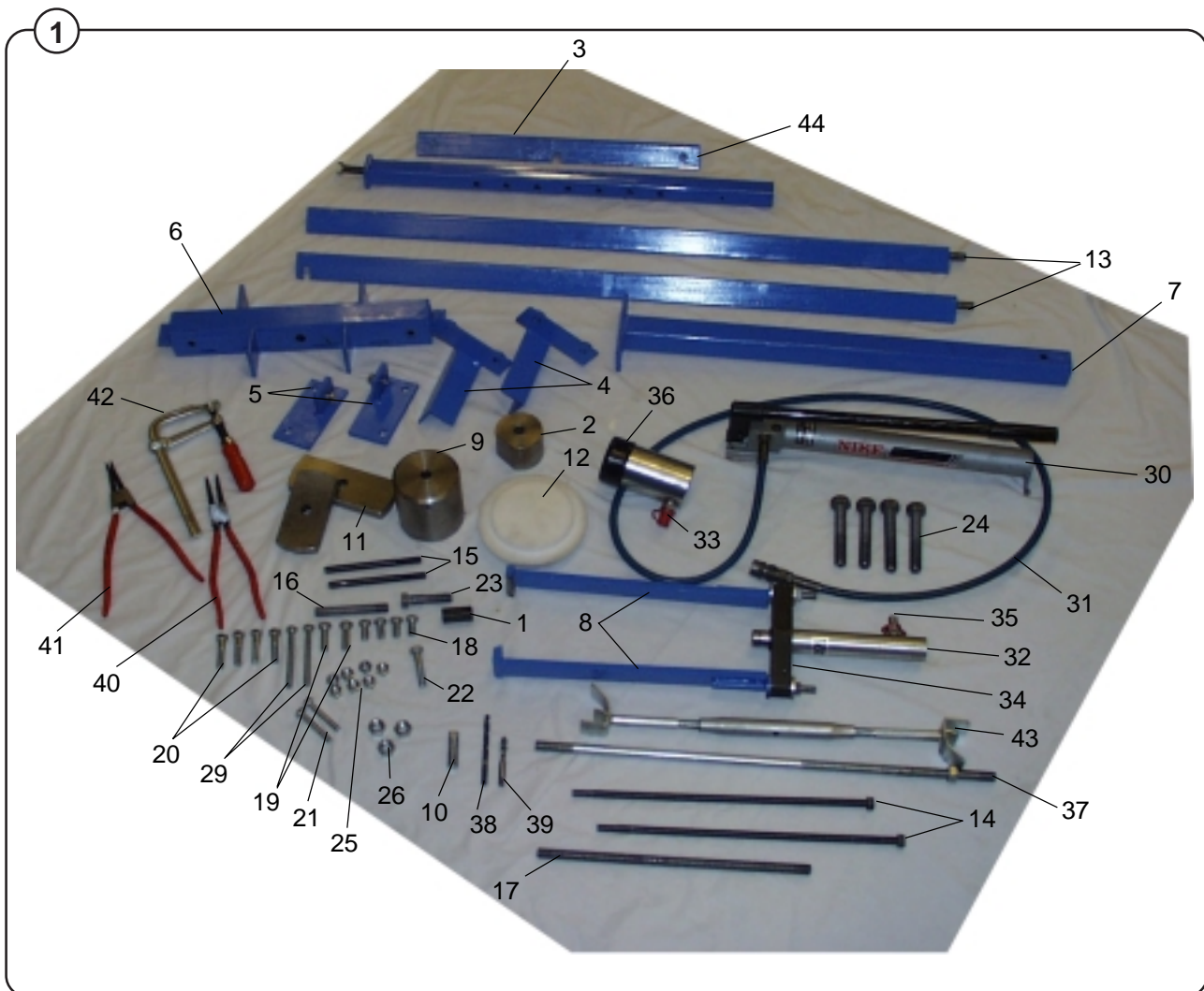
NOTE:

Improper installation or servicing of Wascomat equipment will void the manufacturer's warranty!

Repair instruction

Fig. 1 Complete tool set, art.No. 438 4513-01.





Pos	Qty	Art. No.	Description
1	1	432 0439-01	Nut
2	1	432 0448-01	Holder-on
3	1	432 0492-01	Stay
4	1	432 0495-01	Support, right
	1	432 0495-02	Support, left
5	1	432 0496-01	Support, left
	1	432 0496-02	Support, right
6	1	432 0497-01	Yoke
7	1	432 0498-01	Support
8	2	432 0499-01	Puller
9	1	432 5000-01	Holder-on
10	1	432 5001-01	Bolt
11	1	432 5002-01	Holder-on, small
	1	432 5002-02	Holder-on, large
12	1	432 5003-01	Mandrel for sealings
13	2	432 5004-01	Rail
14	2	432 5005-01	Guide bolt
15	2	432 5006-01	Pin bolt
16	1	471 8330-01	Threaded pin M16 x 115
17	1	471 8330-02	Threaded pin M16 x 390
18	4	725 2534-51	Bolt M12 x 25
19	2	725 2536-51	Bolt M12 x 30
20	2	725 2540-51	Bolt M12 x 40
21	4	725 2542-51	Bolt M12 x 50
22	1	725 2544-51	Bolt M12 x 60
23	1	725 2634-51	Bolt M16 x 70
24	1	725 2634-71	Bolt M16 x 70H
25	9	731 2322-01	Nut M12
26	5	731 2324-01	Nut M16
27	2	734 1178-01	Washer 13 x 24
28	2	725 2501-71	Screw M10 x 50
29	2	725 2509-71	Screw M10 x 90
30	1	438 6020-10	Hydraulic pump
31	1	438 6020-12	Hydraulic hose
32	1	438 6020-13	Hydraulic cylinder
33	1	438 6020-11	Connection
34	1	438 6021-01	Yoke
35	1	438 6027-01	Connection
36	1	471 4008-85	Hydraulic cylinder
37	1	471 4172-01	Pull rod
38	1	438 8001-01	Drill ø 8,5 mm
39	1	438 8002-01	Thread top M10
40	1	438 8003-01	Plier J4
41	1	438 8003-02	Plier A4
42	1	438 8004-01	Clamp
43	1	472 7210-01	Support
44	1	432 0487-01	Support

Fig. Bearing kit, art.No. 438 4542-01.

2



- To make space for the bearing change min 2m space is needed behind the machine.
- Disconnect all connections to the machine, such as water, steam, etc.
- Remove V-belts and the speed control on the bearing house.

3



- Fig. 3
- Remove the pulley. Loosen the locking nut on the pulley. Mount the hydraulic piston and two M10x100. Connect the hydraulic pump and press off the pulley.

4

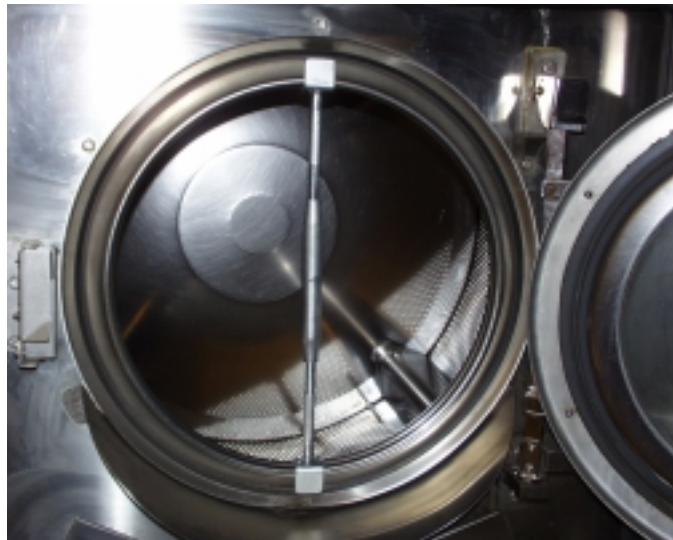


Fig.
4

- Drill and thread two M10 in the inner drum in line with the outer frame support, in the rear part of the drum. Mount the support screws in the drum until they reach the outer drum. Mount the support screw in the door opening.
- Remove all bolts in the bearing house.

5

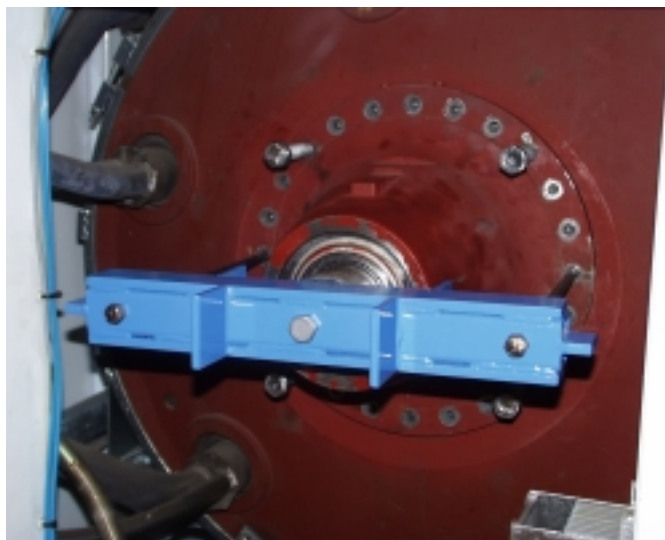


Fig.
5

- Mount four M20 with drawel bolts, holder-on and guide pins. Press out the bearing house.
- Remove the holder-on.

6

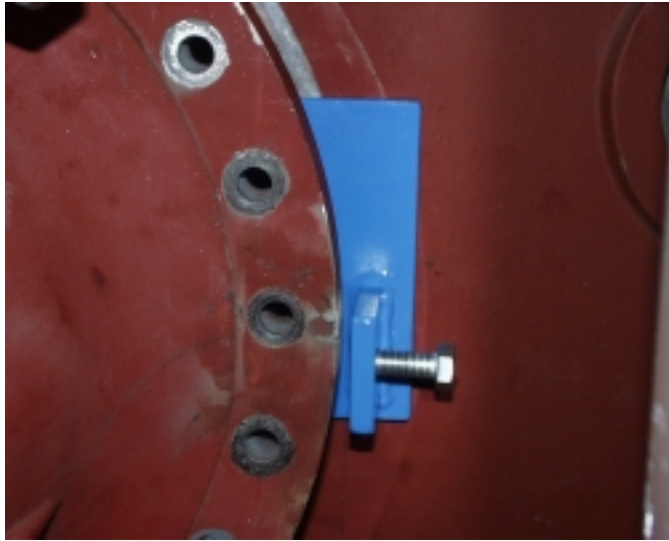


Fig.
6

- Mount two brace supports to the rear gable. Use the two holes just over and under the center line.

7



Fig.
7

- Mount the end support and guide supports to the supports earlier mounted to the rear gable.

8

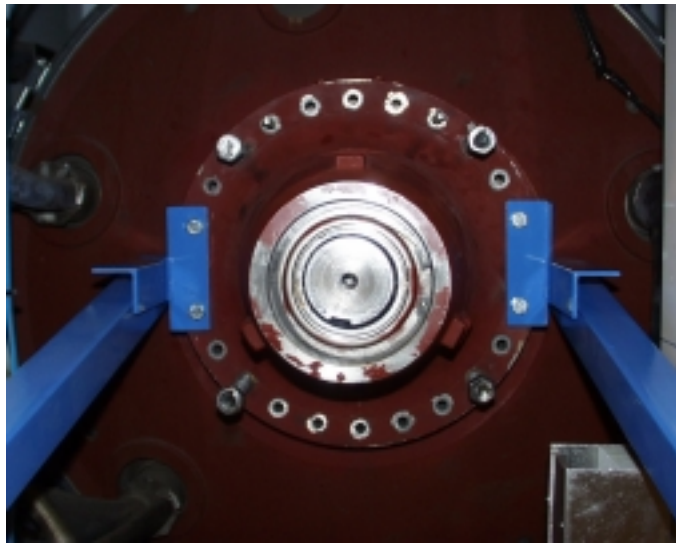


Fig.
8

- Lower the end support leg when mounting the supports to the bearing house.
Put some grease on the guide supports.

9

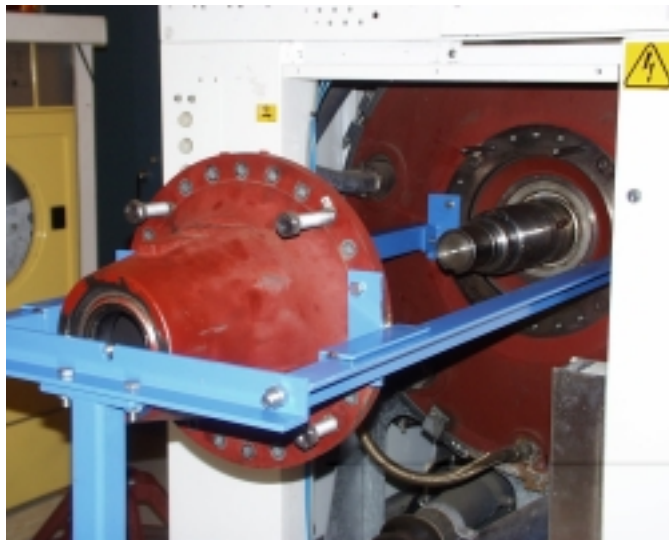


Fig.
9

- Pull out the bearing house.
- Remove the C-lamp and sleeve from the shaft.

10

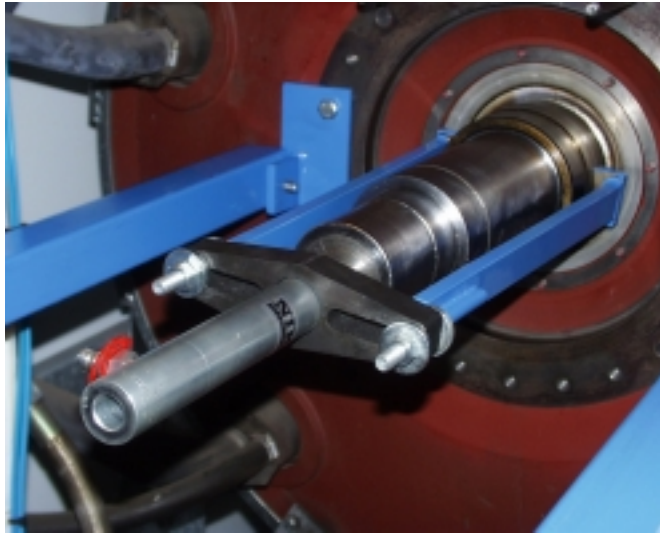


Fig.

10

- Mount the puller on the shaft too withdraw the bushing. Mount the clamp over the puller leg to stop it from sliding apart.

11



Fig.

11

- Heat up the bearing ring and bushing, it will about 8-10 min before the ring and bushing come off.
- Remove the oil tubes on the bearing cover.

12

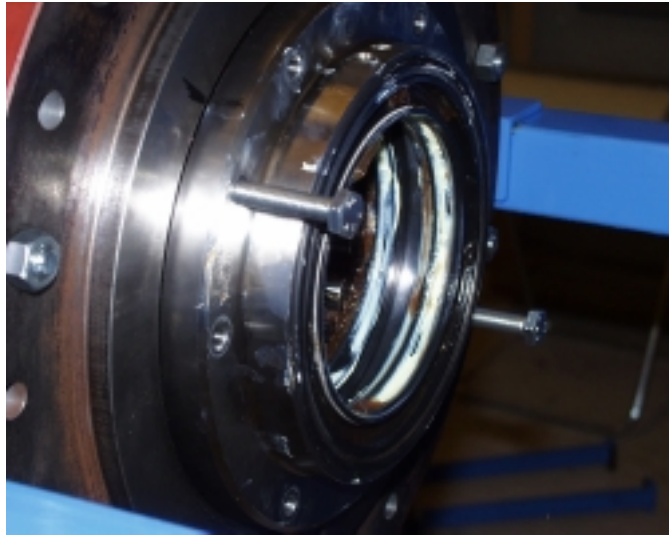


Fig. 12 • Press out the bearing cover by using two M10x65 bolts.

13

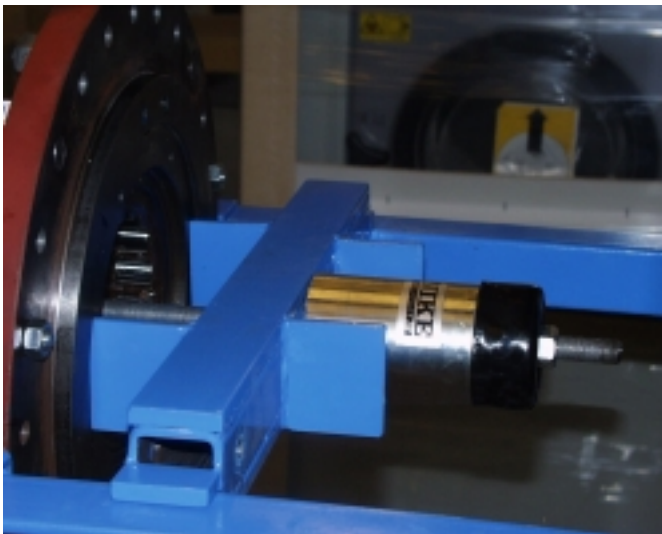


Fig. 13 • Press out the roller bearing.
• Remove the c-clamp in the bearing house.

14

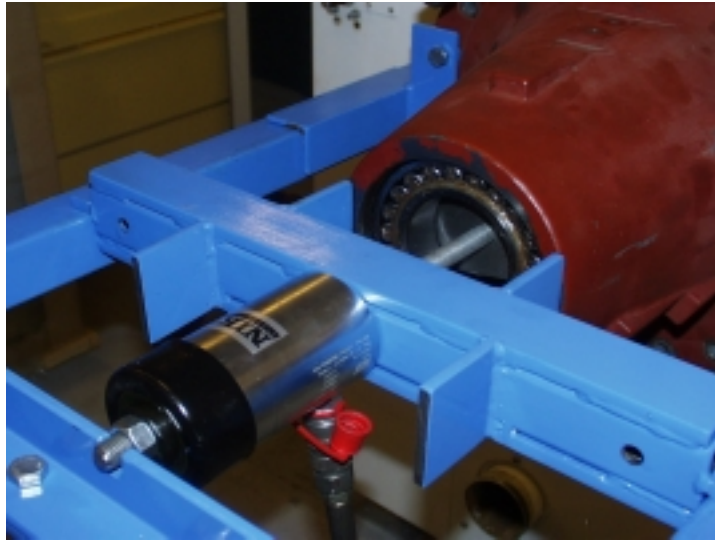


Fig.

14

- Press out the rear bearing.

15



Fig.

15

- Clean bearing house and shaft. Corrosion on the shaft has to be removed.
Heat up the bushing and the bearing ring on a hot plate and then mount them on the shaft, bushing first.
- Mount the c-clamps in the bearing house.

16

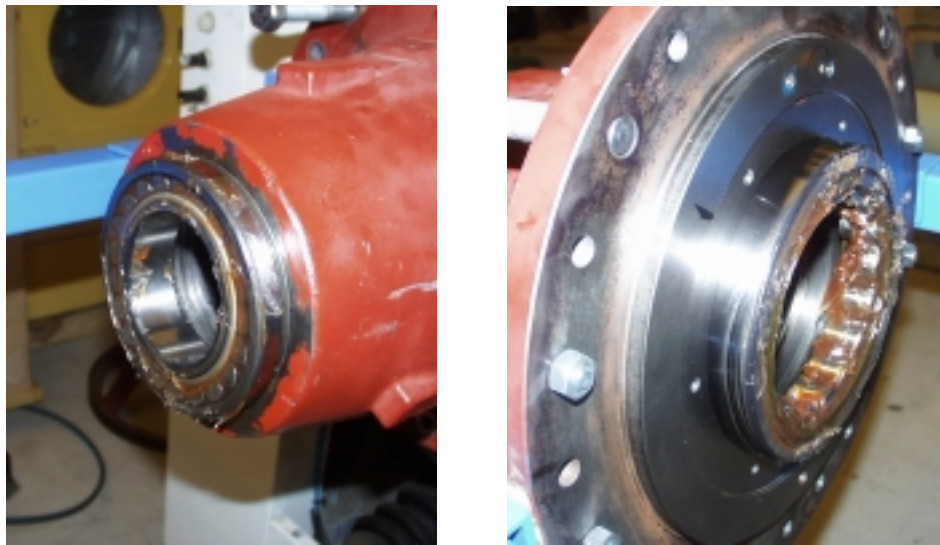


Fig.
16

- Grease both bearings. Knock them carefully in position.

17

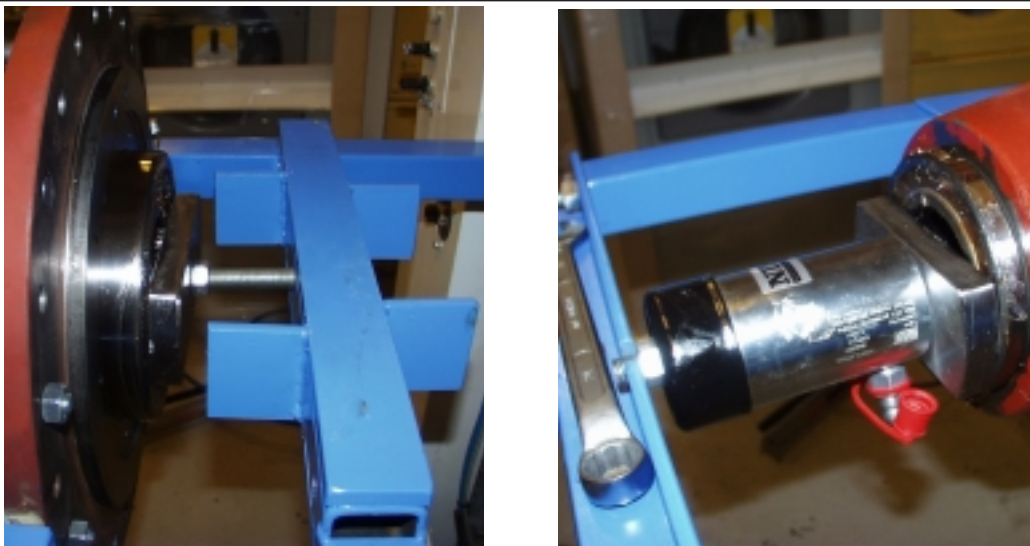


Fig.
17

- Use the rest of the grease for the bearing house. Save a little for the shaft.

18



Fig.
18

- Remove the old sealing rings in the bearing cover. Mount new and grease with amblygon.
- Mount the bearing cover on to the bearing house.

19



Fig.
19

- Mount the lubrication tube(-s).
- Grease the shaft, mount the sleeve and c-clamp.

20



Fig.
20

- Push the bearing house on yo yhe shaft.
- Remove the frame.

21



Fig.
21

- Mount the tools as shown and press the bearing house in position. Mount and tighten all 20 bolts.
- Mount the metal bearing cover and c-clamp at the rear end of bearing house.
- Remove the support screws in door opening and inner drum.
- Mount the new V-ring on the pulley and grease it.

22



Fig.
22

- Mount the sleeve and wedge on the shaft.

23



Fig.
23

- Press the pulley in position. Lock the pulley with the screw.
- Mount the speed control and V-belt.
- Connect all connections such as water, steam, etc.
- Test run the machine.